

LAFCO MEMORANDUM

SANTA BARBARA LOCAL AGENCY FORMATION COMMISSION

105 East Anapamu Street • Santa Barbara CA 93101 • (805) 568-3391 + Fax (805) 568-2249

January 14, 2021 (Agenda)

TO: Each Member of the Commission

FROM: Mike Prater
Executive Officer

SUBJECT: Report on 2021 UCLA Conference Activities

This is an Informational Report. No Action is Necessary

DISCUSSION

One Commissioners and LAFCO's Legal Counsel attended the UCLA Planning and Land Use Conference on January 8, 2021.

The Conference material is attached as **Exhibit A**.

The program, included practitioners from both land use law and planning disciplines providing balanced analysis of critical legal cases that affect land use decisions. The conference also focused on the actual results of laws that have been in effect for some time and provided updates on aspects of the law, like CEQA, that evolve every year. The panelists provided their insight and perspective into land use issues ranging from housing and rent control to coastal policies, cannabis land use, and development and zoning law.

Santa Barbara LAFCO conference attendees will brief the Commission on perceptions of the conference.

Exhibits

Exhibit A UCLA Conference Materials

Please contact the LAFCO office if you have any questions.

UCLA Extension

35th Annual Land Use Law & Planning Conference

NOW VIRTUAL



UPDATES, TRENDS & ASSESSMENTS

UCLA EXTENSION PUBLIC POLICY PROGRAM

FRIDAY, JANUARY 8, 2021, 9:00AM-12:30PM

EXHIBIT A

35th Annual

Land Use Law & Planning Conference

UPDATES, TRENDS & ASSESSMENTS

FRIDAY, JANUARY 8, 2021, 9:00AM-12:30PM

UCLA Extension's annual Land Use Law and Planning Conference is the leading source of information on California land use legislation, case law, and the emerging issues that frame land use and development practices in the nation's most populous state. It is essential for attorneys, planners, environmentalists, and developers who need to know how land use law and planning is changing and affecting their interests. The program's unique cross-disciplinary approach explores the full range of perspectives drawn from the land use planning, legal, development, and environmental communities, and demonstrates how these factors influence the day-to-day work of planners, developers, environmental regulators, and attorneys.

Now in its 35th year, the conference offers a big-picture view of land use law and planning practice, with knowledgeable speakers providing succinct and provocative updates on core state and federal case law and legislation, as well as practice pointers on basic land use law and planning issues. This virtual edition of the conference will be shorter than in years past and will focus on vital updates for the year as well as relevant pandemic-related information.

Join us on **January 8** for a review of the important issues of the past year and a look at what's ahead for 2021.

CONFERENCE CHAIRS



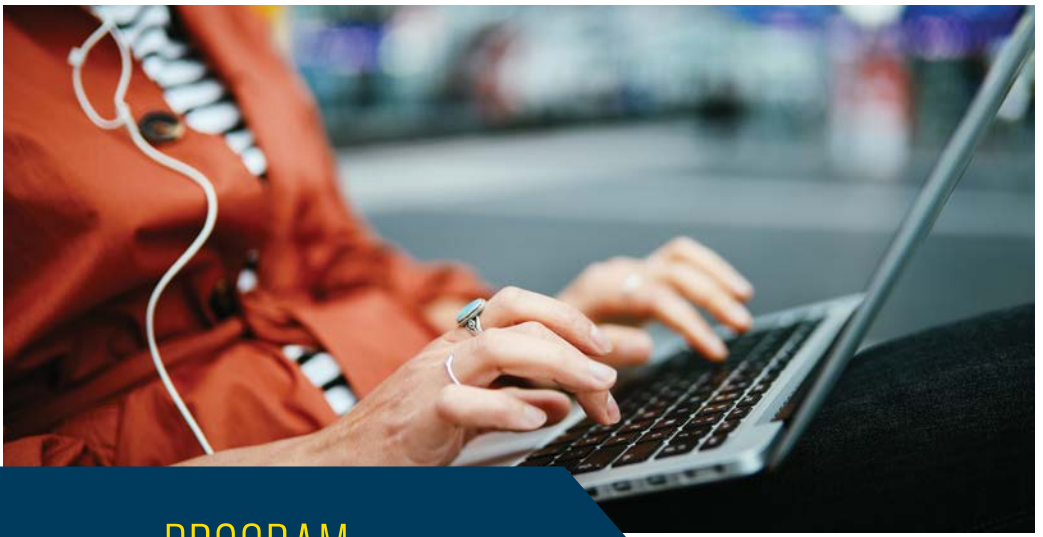
Alisha Winterswyk
Partner, Best Best & Krieger LLP



David Smith
Partner, Manatt, Phelps & Phillips, LLP



Matt Burris
Deputy City Manager, City of Rancho Cucamonga



PROGRAM

9:00am

WELCOME & PROGRAM OVERVIEW

Dr. *Stephanie Hoekstra*, *Public Policy Program, UCLA Extension*

9:05am

UPDATE #1 – CEQA 2020- The Courts are not “On Mute”

A perennial staple and favorite at the conference, hear distinguished counsel representing all sides—petitioner, respondent, and real party in interest—survey the latest judicial, legislative, and regulatory developments in the CEQA arena, providing invaluable and strategic insights as to their implications for legal practitioners, consultants, and lead agencies.

MODERATOR: *David Smith*, *Partner, Manatt, Phelps & Phillips, LLP*

PANELISTS: *Kevin Bundy*, *Of Counsel, Shute, Mihaly & Weinberger*
Tina Thomas, *Founding Partner, Thomas Law Group*

10:40am

BREAK



EXHIBIT A



11:00am

UPDATE #2 – Planning, Zoning, and Development Law: What's New from California's Judicial and Legislative Branches?

Extra! Extra! Hear all about it! California courts and our state legislators worked mightily in 2020 tackling important planning, zoning, and development law issues. Join our panelists as they walk through the high points of last year's statutory and case law adventures, which will undoubtedly put you ahead of the rest on your land use trivia.

MODERATOR: **Alisha Winterswyk**, *Partner, Best Best & Krieger LLP*

PANELISTS: **Matt Klopfenstein**, *Legislative and Legal Advisor, California Advisors, LLC*
Todd Leishman, *Of Counsel, Best Best & Krieger LLP*

12:25pm

CLOSING COMMENTS

Dr. Stephanie Hoekstra, *Public Policy Director, UCLA Extension*



EXHIBIT A

GENERAL INFORMATION

Event Begins Promptly at 9:00AM

Please sign in to webinar by 8:50am to avoid missing content.

Fees & Credit

Registration is required for this program.

Registration Fee: \$245

In the revised and shortened format of this year's conference, there is only one standard registration fee. Fee includes conference materials sent via email.

0.3 CEU

*MCLE Credit Program: Up to 3 hours

**CM credit: Up to 3 hours

**This activity has been approved for Minimum Continuing Legal Education (MCLE) credit by the State Bar of California for credit hours stated above. UCLA Extension certifies that this activity conforms to the standards for approved educational activities prescribed by the rules and regulations of the State Bar of California governing minimum continuing legal education. In our virtual environment, UCLA Extension is required to document the sign-in and sign-out times of each participant on Zoom. When you submit your hours for credit, you can only submit the amount of time that you participated in the Zoom webinar.*

***This activity has been approved for Continuing Professional Development Program (CM) credits by the American Institute of Certified Planners.*

Enrollment

ONLINE

Visit uclaextension.edu/LandUse for full information about this conference and to enroll.

MAIL

Use the attached form. For additional enrollments, use photocopy or separate sheets giving all information requested on the form. When enrolling by mail, you must allow enough time (approximately two weeks) for your payment to be processed and to receive your enrollment confirmation.

When registering for the webinar, please use the same name that you used when you paid the registration fee through UCLA Extension. If you have any issues, contact humsci@uclaextension.edu for assistance.

Refunds

A service charge of \$30 is withheld from all refunds (full refund granted if course is canceled or rescheduled). Requests must be postmarked or phoned in five working days before the program date. Refunds cannot be made after that date. For more information, call **(310) 825-9971**.

Tax Credit

You might be eligible for a tax credit for fees paid at UCLA Extension. For details, see the tax information in the general information section of the UCLA Extension quarterly catalog, or visit uclaextension.edu.

For More Information

Public Policy Program

UCLA Extension

10960 Wilshire Boulevard, 16th Floor

Los Angeles, CA 90024-1333

(310) 825-7093

uclaextension.edu/LandUse

UCLA

Extension

35th Annual

Land Use Law & Planning Conference

UPDATES, TRENDS & ASSESSMENTS

**FRIDAY, JANUARY 8, 2021, 9:00AM-12:30PM
VIRTUAL EVENT**

uclaextension.edu/LandUse

EXHIBIT A

Nonprofit Org.
U.S. Postage
PAID
UCLA

10960 Wilshire Boulevard, 17th Floor, Los Angeles, CA 90024