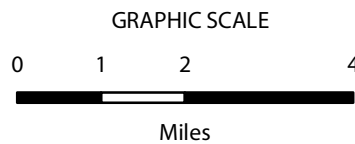


North County Lighting District – Overview

Compiled by the Office of the County Surveyor on 09/04/2018. Formed by LAFCO 94-07, 6/30/1994. Sphere: 11/04/2010. Last Action: 23, Bradley Village Reorganization, LAFCO 15-06, 03/22/2016. See Boundary activity table at <http://www.countyofsb.org/pwd/pwsurveyor.aspx?id=23260>

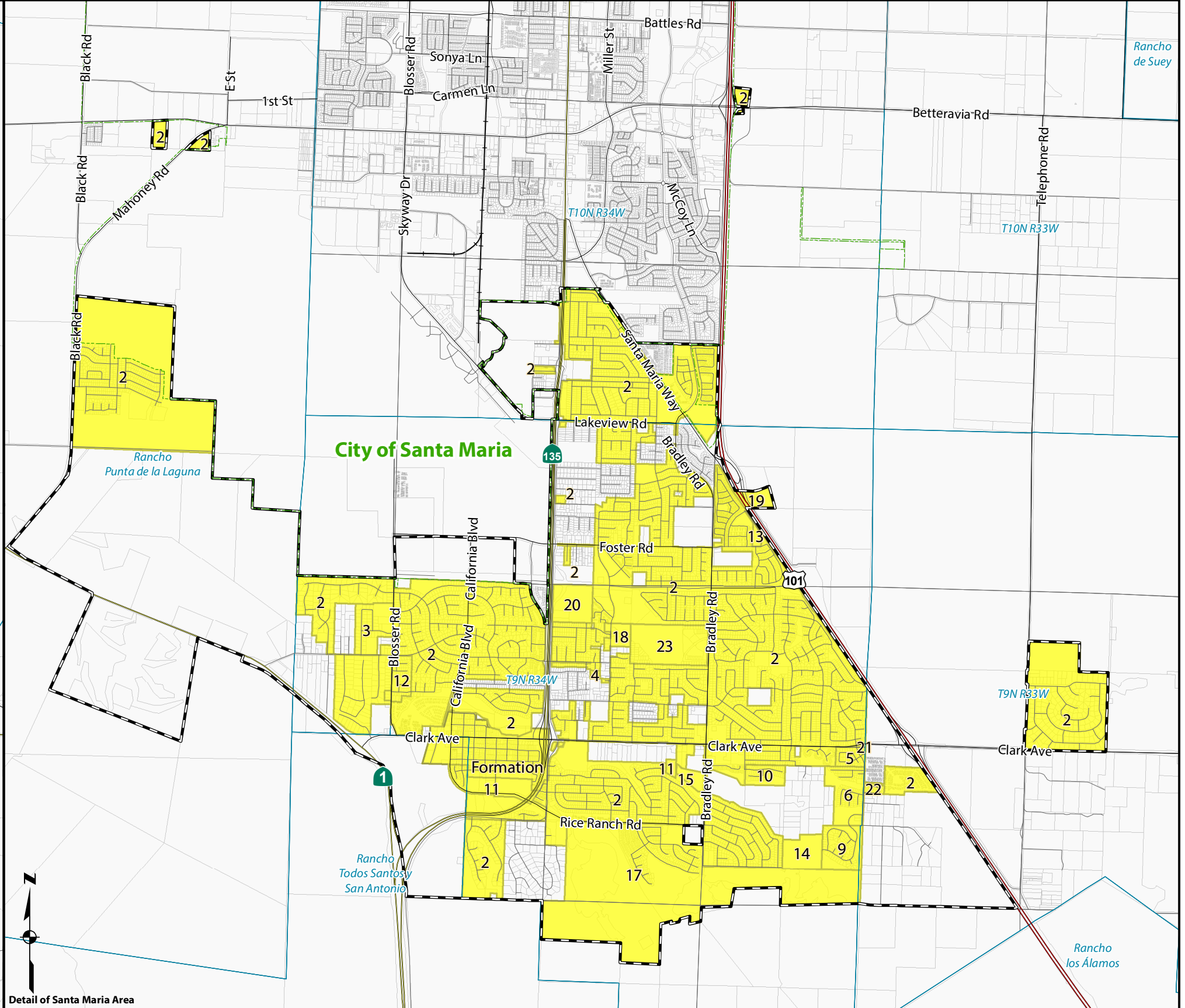
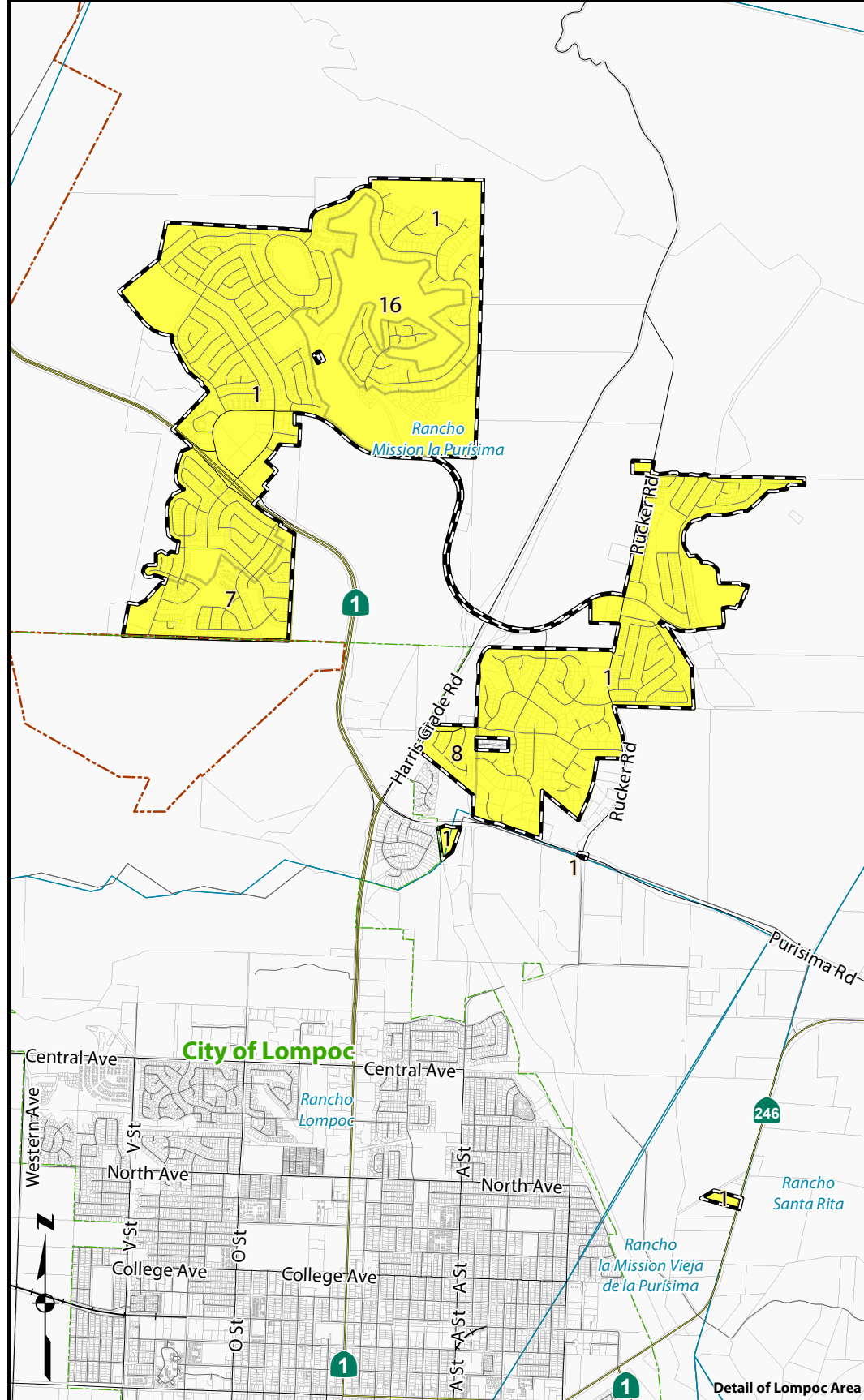
NOTICE OF DISCLAIMER: This data is for reference only. Although every effort has been made to ensure the accuracy of information, errors and conditions originating from physical sources used to develop the database may be reflected in this data. Santa Barbara County shall not be liable for any errors, omissions, or damages that result from inappropriate use of this document. No level of accuracy is claimed for the boundary lines shown hereon and lines should not be used to obtain coordinate values, bearings or distances.



Legend

- Highways
- Roads
- Railroads
- Parcels
- Sections
- Ranchos and Townships
- Vandenberg Air Force Base
- City Boundaries
- County Boundary
- San Luis Obispo County
- Sphere of Influence
- Formation
- Annexation
- Detachment

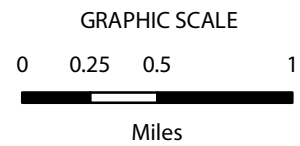




North County Lighting District – Details

Compiled by the Office of the County Surveyor on 09/04/2018. Formed by LAFCO 94-07, 6/30/1994. Sphere: 11/04/2010. Last Action: 23, Bradley Village Reorganization, LAFCO 15-06, 03/22/2016. See Boundary activity table at <http://www.countyofsb.org/pwd/pwsurveyor.aspx?id=23260>

NOTICE OF DISCLAIMER: This data is for reference only. Although every effort has been made to ensure the accuracy of information, errors and conditions originating from physical sources used to develop the database may be reflected in this data. Santa Barbara County shall not be liable for any errors, omissions, or damages that result from inappropriate use of this document. No level of accuracy is claimed for the boundary lines shown hereon and lines should not be used to obtain coordinate values, bearings or distances.



Legend

- Highways
- Freeways
- Roads
- Railroads
- Parcels
- Sections
- Ranchos and Townships
- Vandenberg Air Force Base
- City Boundaries
- Sphere of Influence
- Formation
- Annexation
- Detachment



North County Lighting District Boundary Activity

See map at <http://www.countyofsb.org/pwd/pwsurveyor.aspx?id=23260>

InternalNo	Title	Type	Effective	LAFCO_No	LAFCO_Date	Instrument	Recorded
0	Los Alamos Lighting District Consolidation	Formation	6/30/1994	94-07	5/5/1994	1994-0054428	6/30/1994
0	Casmalia Lighting District Consolidation	Formation	6/30/1994	94-07	5/5/1994	1994-0054428	6/30/1994
0	Orcutt Lighting District Consolidation	Formation	6/30/1994	94-07	5/5/1994	1994-0054428	6/30/1994
1	CSA 4 Annexation	Annexation	6/30/1994	94-08	5/5/1994	1994-0054429	6/30/1994
2	CSA 5 Annexation	Annexation	6/30/1994	94-08	5/5/1994	1994-0054429	6/30/1994
3	Lorraine Estates Reorganization	Annexation	8/21/1996	960-6	6/6/1995	1996-0051069	8/21/1996
4	Merridock Reorganization	Annexation	2/28/1997	96-12	11/7/1996	1997-0010925	2/28/1997
5	Cimmarron Estates Reorganization	Annexation	3/7/1997	96-13	11/7/1996	1997-0012344	3/7/1997
6	Cobblestone Reorganization	Annexation	10/7/2003	02-13	4/10/2003	2003-0137988	10/7/2003
7	Providence Landing Reorganization	Annexation	11/6/2003	03-10	11/6/2003	2004-0044691	4/28/2004
8	Bluffs at Mesa Oaks Reorganization	Annexation	5/18/2004	03-09	10/2/2003	2004-0053338	5/18/2004
9	Refiled Mesa Verde Reorganization	Annexation	12/16/2004	04-05	8/5/2004	2004-0132849	12/16/2004
10	Harp Reorganization	Annexation	10/10/2005	05-06	5/5/2005	2005-0098607	10/10/2005
11	Stonegate Reorganization	Annexation	4/5/2006	05-18	12/1/2005	2006-0026742	4/5/2006
12	Old Mill Run Reorganization	Annexation	10/4/2006	06-10	6/1/2006	2006-0077979	10/4/2006
13	Knollwood Reorganization	Annexation	11/29/2006	06-07	6/1/2006	2006-0092846	11/29/2006
14	Vintage Ranch Reorganization	Annexation	2/15/2007	06-02	3/2/2006	2007-0011570	2/15/2007
15	Orcutt Creek Estates Reorganization	Annexation	3/8/2007	06-18	12/7/2006	2007-0017232	3/8/2007
16	Clubhouse Estates Reorganization	Annexation	4/20/2007	07-02	4/5/2007	2007-0029597	4/20/2007
17	Refiled Rice Ranch Reorganization	Annexation	6/27/2007	07-04	3/1/2007	2007-0047572	6/27/2007
18	Hummel Village Reorganization	Annexation	10/29/2007	07-09	8/2/2007	2007-0076075	10/29/2007
19	Hope Church Reorganization	Annexation	8/26/2008	08-05	8/26/2008	2008-0050388	8/26/2008
20	Union Valley Parkway (Phase III) Reorganization	Annexation	8/4/2011	11-03	8/4/2011	2011-0051342	9/9/2011
21	Key Site 4 Reorganization	Annexation	9/13/2013	13-04	6/6/2013	2013-0061344	9/13/2013
22	Terrace Villas Reorganization	Annexation	1/3/2014	13-07	9/5/2013	2014-0000256	1/3/2014
23	Bradley Village Reorganization	Annexation	3/22/2016	15-06	2/4/2016	2016-0013463	3/22/2016
	North County Lighting District Sphere of Influence	SOI	11/4/2010		11/4/2010		