

LAFCO MEMORANDUM

SANTA BARBARA LOCAL AGENCY FORMATION COMMISSION

105 East Anapamu Street • Santa Barbara CA 93101 • (805) 568-3391 + Fax (805) 568-2249

March 5, 2026 (Agenda)

TO: Each Member of the Commission

FROM: Mike Prater
Executive Officer

SUBJECT: RECEIVE FOR INFORMATION PURPOSES PROPOSAL FILE № 26-01 FOR THE EI
CAPITAN HORSE RANCH ANNEXATION TO GOLETA WATER DISTRICT

This is an Informational Report. No Action is Necessary

FISCAL IMPACT

The deposit to process the application has been paid by Mark Lloyd, agent.

DISCUSSION

This memo provides the Commission with a formal notice of the receipt of a new application. Staff will provide appropriate notice and requests for information to affected agencies and interested individuals consistent with Government Code section 56857(a).

The application was received February 12, 2026, as a petition of application. It is to amend the sphere of influence and annex one parcel consisting of 201.08 acres of property into the Goleta Water District for water service. The application will be processed through the LAFCO system coordinating with all affected agencies and interested parties.

Attachments

Attachment A – Map & Legal Description

Please contact the LAFCO office if you have any questions.

Exhibit A – Legal Description

El Capitan Horse Ranch Sphere of Influence Change and Annexation to Goleta Water District

LAFCO 26-##

That portion of the 1835.90 acre “Remainder Parcel” shown on Parcel Map 13,380 as amended within the Rancho Canada del Corral, in the County of Santa Barbara, State of California, as per map filed September 17, 1997 in Book 52, Pages 53 through 56, inclusive, of Parcel Maps, said “Remainder Parcel is shown on a Certificate of Compliance, recorded September 17, 1997 as Instrument No. 97-055086 of Official Records, both in the Office of the County Recorder of said County, described as follows:

Beginning at an angle point in the easterly line of said Parcel Map No. 13,380, said angle point being the northeasterly terminus of that certain course being noted thereon as “North 24°00'00" East, 1130.00 feet”, the bearing of said line is North 23°59'46" East;

Thence leaving said easterly line South 54°57'19" West, a distance of 1,728.12 feet;

Thence South 43°17'52" West, a distance of 336.05 feet;

Thence South 24°50'00" West, a distance of 235.63 feet;

Thence North 82°51'27" West, a distance of 423.38 feet;

Thence North 26°25'42" West, a distance of 725.04 feet;

Thence North 70°31'42" West, a distance of 374.61 feet;

Thence South 36°42'17" West, a distance of 51.65 feet;

Thence South 33°55'14" West, a distance of 57.87 feet;

Thence South 32°59'01" West, a distance of 33.97 feet;

Thence South 25°57'16" West, a distance of 30.12 feet;

Thence South 13°35'39" West, a distance of 93.69 feet;

Thence South 16°02'53" West, a distance of 65.64 feet;

Thence South 10°13'10" West, a distance of 22.40 feet;

Thence South 17°58'42" East, a distance of 25.91 feet;

Thence South 27°06'29" East, a distance of 37.06 feet;
Thence South 27°49'24" East, a distance of 81.36 feet;
Thence South 29°33'37" East, a distance of 115.40 feet;
Thence South 20°23'12" East, a distance of 31.74 feet;
Thence South 13°34'39" East, a distance of 25.82 feet;
Thence South 04°06'46" East, a distance of 89.68 feet;
Thence South 11°33'58" East, a distance of 33.48 feet;
Thence South 20°41'05" East, a distance of 43.93 feet;
Thence South 19°32'14" East, a distance of 53.73 feet;
Thence South 11°33'58" East, a distance of 37.70 feet;
Thence South 03°52'50" East, a distance of 47.97 feet;
Thence South 03°42'00" East, a distance of 36.25 feet;
Thence South 08°37'13" East, a distance of 78.85 feet;
Thence South 08°31'45" East, a distance of 47.38 feet;
Thence South 15°57'13" East, a distance of 31.31 feet;
Thence South 09°28'02" West, a distance of 30.32 feet;
Thence South 30°35'34" West, a distance of 44.55 feet;
Thence South 39°34'30" West, a distance of 22.64 feet;
Thence South 22°41'34" West, a distance of 51.01 feet;
Thence South 19°26'59" West, a distance of 48.41 feet to the beginning of a tangent curve, concave northerly and having a radius of 45.00 feet;
Thence westerly along said curve, through a central angle of 149°45'38", an arc distance of 117.62 feet;
Thence North 10°47'23" West, a distance of 24.92 feet;
Thence North 08°40'09" West, a distance of 69.61 feet;
Thence North 07°53'14" West, a distance of 54.68 feet to the beginning of a tangent curve, concave southerly and having a radius of 12.00 feet;
Thence westerly along said curve, through a central angle of 167°28'29", an arc distance of 35.08 feet;

Thence South 04°38'17" West, a distance of 60.54 feet;
Thence South 15°45'05" West, a distance of 37.37 feet;
Thence South 17°58'42" West, a distance of 62.53 feet;
Thence South 21°41'07" West, a distance of 67.51 feet;
Thence South 24°39'14" West, a distance of 33.46 feet;
Thence South 14°41'02" West, a distance of 33.00 feet;
Thence South 13°27'21" West, a distance of 38.24 feet;
Thence South 19°59'35" West, a distance of 29.70 feet;
Thence South 27°21'45" West, a distance of 28.25 feet;
Thence South 37°46'38" West, a distance of 38.85 feet;
Thence South 45°00'56" West, a distance of 33.88 feet;
Thence South 56°19'27" West, a distance of 61.26 feet to the beginning of a tangent curve, concave southeasterly and having a radius of 85.00 feet;
Thence southwesterly along said curve, through a central angle of 35°28'10", an arc distance of 52.62 feet;
Thence South 20°51'17" West, a distance of 38.92 feet to the beginning of a tangent curve, concave northwesterly and having a radius of 215.00 feet;
Thence southwesterly along said curve, through a central angle of 30°08'27", an arc distance of 113.10 feet;
Thence South 50°59'45" West, a distance of 52.38 feet;
Thence South 49°45'07" West, a distance of 60.11 feet;
Thence South 46°56'15" West, a distance of 83.33 feet;
Thence South 46°53'14" West, a distance of 86.04 feet;
Thence South 47°36'02" West, a distance of 61.18 feet;
Thence South 43°35'00" West, a distance of 44.52 feet;
Thence South 44°28'12" West, a distance of 63.88 feet to the beginning of a tangent curve, concave northwesterly having a radius of 215.00 feet;
Thence southwesterly along said curve, through a central angle of 23°44'21", an arc distance of 89.08 feet;
Thence South 68°12'33" West, a distance of 63.33 feet;

Thence South 69°53'26" West, a distance of 85.68 feet;

Thence South 70°09'29" West, a distance of 105.76 feet;

Thence South 69°22'49" West, a distance of 73.16 feet;

Thence South 78°02'03" West, a distance of 59.56 feet;

Thence South 81°48'23" West, a distance of 95.68 feet;

Thence South 85°38'43" West, a distance of 84.48 feet;

Thence South 88°14'37" West, a distance of 66.66 feet to the beginning of a tangent curve, concave northerly and having a radius of 115.00 feet;

Thence westerly along said curve, through a central angle of 12°36'25", an arc distance of 25.30 feet;

Thence North 79°08'58" West, a distance of 54.36 feet to the beginning of a tangent curve, concave southerly and having a radius of 65.00 feet;

Thence westerly along said curve, through a central angle of 56°29'20", an arc distance of 64.08 feet;

Thence South 44°21'42" West, a distance of 82.94 feet to the beginning of a tangent curve, concave southeasterly and having a radius of 95.00 feet;

Thence southwesterly along said curve, through a central angle of 31°30'26", an arc distance of 52.24 feet;

Thence South 12°51'16" West, a distance of 36.24 feet to the beginning of a tangent curve, concave northwesterly and having a radius of 135.00 feet;

Thence southwesterly along said curve, through a central angle of 30°25'14", an arc distance of 71.68 feet;

Thence South 43°16'30" West, a distance of 357.78 feet;

Thence South 48°11'43" West, a distance of 23.31 feet to the beginning of a tangent curve, concave northerly and having a radius of 125.00 feet;

Thence westerly along said curve, through a central angle of 50°57'44", an arc distance of 111.18 feet;

Thence North 80°50'33" West, a distance of 165.50 feet;

Thence North 72°43'15" West, a distance of 192.87 feet;

Thence North 73°01'51" West, a distance of 660.55 feet;

Thence North 83°25'18" West, a distance of 58.09 feet;

Thence South 20°34'00" West, a distance of 58.53 feet to a point in the southerly line of said Parcel Map No. 13,380;

Thence easterly along said southerly line the following courses:

South 82°30'20" East, a distance of 69.46 feet;

South 72°59'12" East, a distance of 850.09 feet;

South 80°49'30" East, a distance of 1,325.00 feet;

South 84°24'05" East, a distance of 400.78 feet;

South 81°32'28" East, a distance of 800.06 feet;

South 78°25'24" East, a distance of 905.00 feet;

North 68°13'20" East, a distance of 241.30 feet;

South 79°54'21" East, a distance of 400.28 feet;

South 69°47'19" East, a distance of 302.93 feet;

South 87°22'47" East, a distance of 10.24 feet to the beginning of a non-tangent curve, concave northwesterly and having a radius of 65.00 feet, the radial center of which bears North 02°34'13" East, said beginning being the southeasterly corner of said Parcel Map No. 13, 380;

Thence northerly along the easterly line of said Parcel Map No. 13,380 the following courses:

Northeasterly along said curve, through a central angle of 81°30'00", a distance of 92.46 feet to the beginning of a reverse curve, concave easterly and having a radius of 230.00 feet, the radial center of which bears South 78°55'47" East;

Northerly along said curve, through a central angle of 07°02'39", an arc distance of 28.28 feet;

North 18°06'52" East, a distance of 279.89 feet to the beginning of a tangent curve, concave westerly and having a radius of 390.00 feet;

Northerly along said curve, through a central angle of 31°30'53", an arc distance of 214.51 feet;

North 13°24'01" West, a distance of 244.37 feet to the beginning of a non-tangent curve, concave southwesterly and having a radius of 116.47 feet, the radial center of which bears South 77°28'31" West;

Northwesterly along said curve, through a central angle of 22°21'38", an arc distance of 45.45 feet to the beginning of a non-tangent curve, concave northeasterly and having a radius of 186.25 feet, the radial center of which bears North 55°59'25" East;

Northwesterly along said curve, through a central angle of 20°36'34", an arc distance of 66.99 feet;

North 13°24'01" West, a distance of 142.63 feet to the beginning of a non-tangent curve, concave westerly and having a radius of 265.34 feet, the radial center of which bears South 82°37'32" West;

Northerly along said curve, through a central angle of 27°26'35", an arc distance of 127.09 feet;

North 28°47'31" West, a distance of 248.17 feet;

North 61°12'29" East, a distance of 60.00 feet to the beginning of a non-tangent curve, concave northerly and having a radius of 65.00 feet, the radial center of which bears North 61°12'29" East;

Easterly along said curve, through a central angle of 90°00'00", an arc distance of 102.10 feet;

North 61°12'29" East, a distance of 199.37 feet to the beginning of a tangent curve, concave northwesterly and having a radius of 670.00 feet;

Northeasterly along said curve, through a central angle of 38°27'29", an arc distance of 449.72 feet;

North 67°15'00" West, a distance of 490.00 feet;

North 30°00'00" East, a distance of 195.00 feet;

North 24°00'00" East, a distance of 450.00 feet;

North 13°00'00" East, a distance of 253.00 feet;

North 04°00'00" West, a distance of 210.00 feet;

North 23°59'46" East, a distance of 1,130.08 feet to the POINT OF BEGINNING.

End of Description

Containing 201.230 acres, more or less.

The bearings and distances for this description are based on the California Coordinate System (CCS 27) Zone 5. Multiply distances by a factor of 1.0000638 to obtain ground distances.

Prepared by: _____ Date: _____
Mark Lloyd, PLS 5470
License Expiration Date 9/30/2018

Approved as to Form
And Surveying Content

Aleksandar Jevremovic, PLS 8378
Santa Barbara County Surveyor
License Expiration Date 12/31/2018

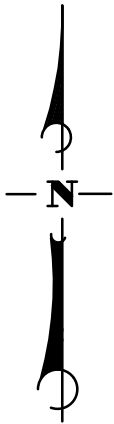
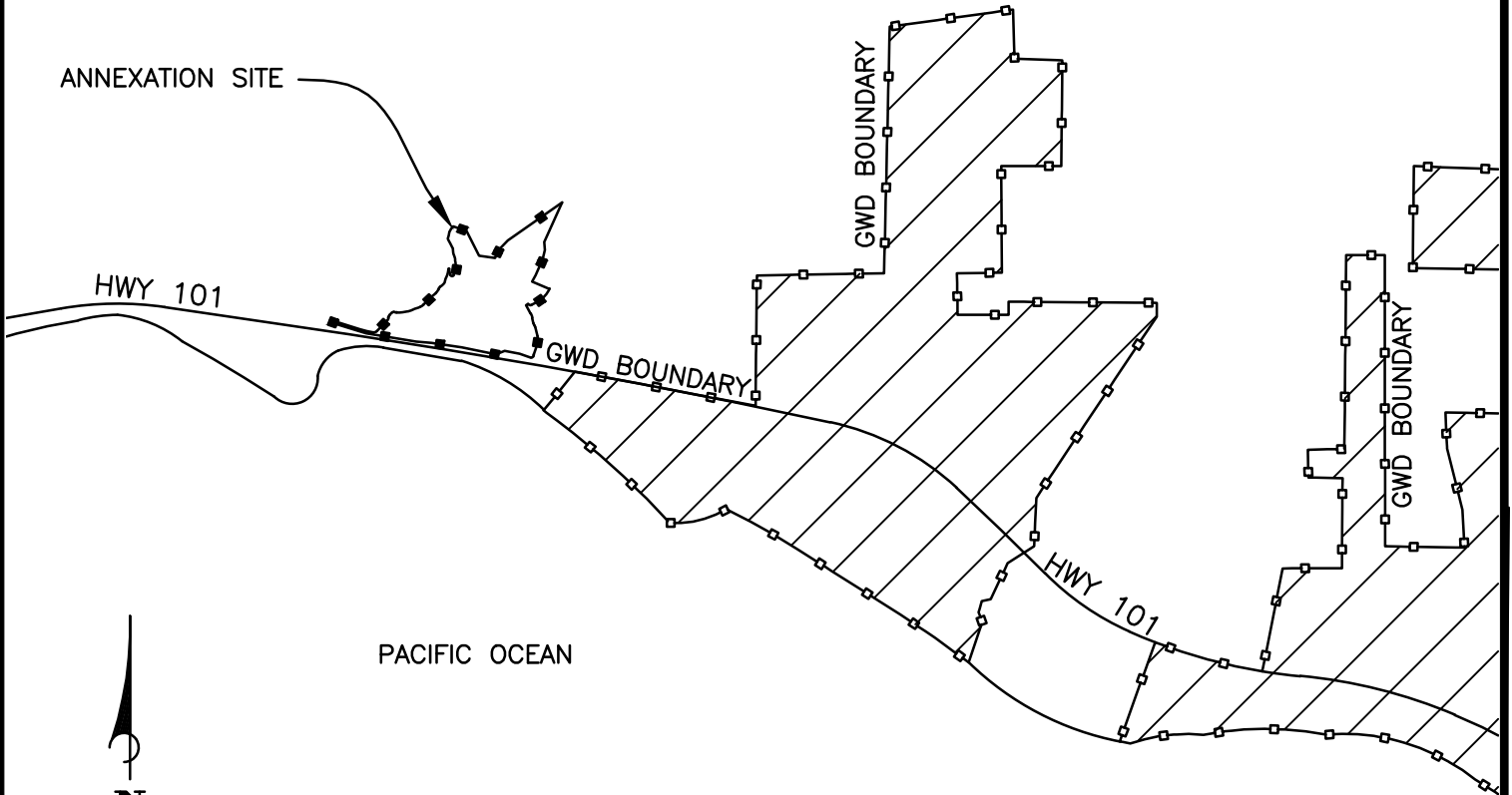
Date: _____

VICINITY MAP:

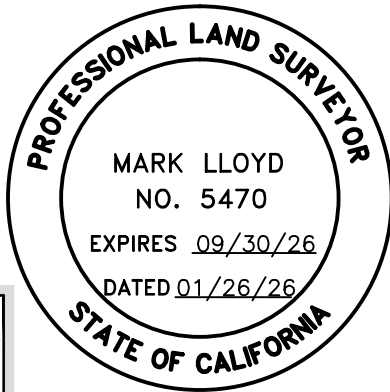
LEGEND

R1 = INST No. 2025-0028517

- EXISTING GOLETA WATER DISTRICT BOUNDARY
- PROPOSED GOLETA WATER DISTRICT ANNEXATION



(NOT TO SCALE)



3 WEST CARRILLO STREET
 SUITE 205
 SANTA BARBARA, CA 93101
 (805) 962-4611

LAFCO 25-XX "EXHIBIT B"
 EL CAPITAN HORSE RANCH
 BOUNDARY CHANGE
 TO GOLETA WATER DISTRICT

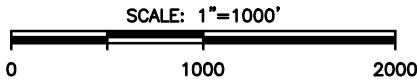
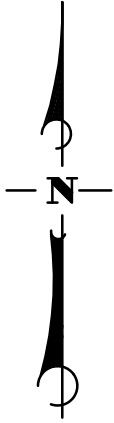
SITE MAP:

LEGEND

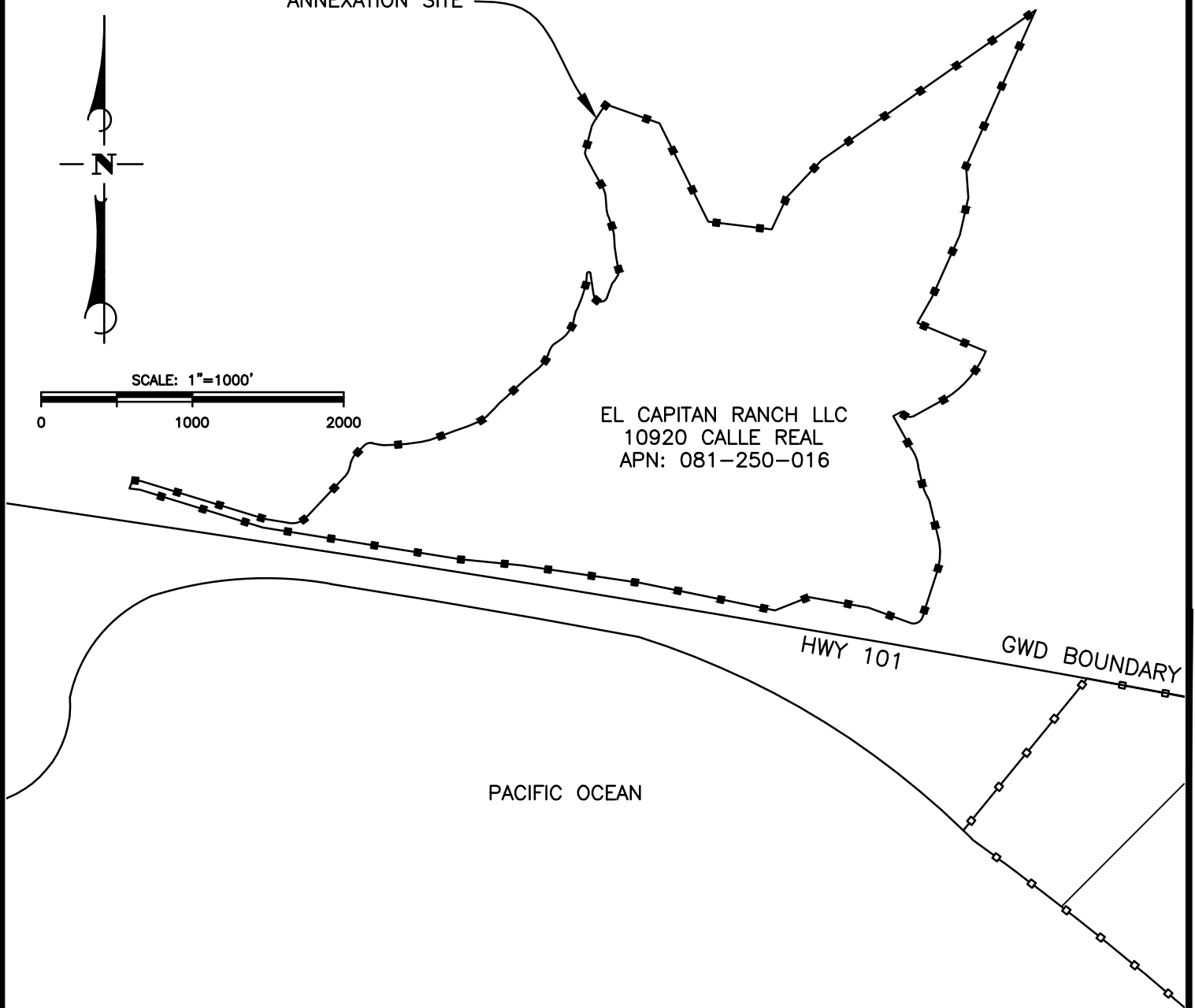
R1 = INST No. 2025-0028517

- EXISTING GOLETA WATER DISTRICT BOUNDARY
- PROPOSED GOLETA WATER DISTRICT ANNEXATION

ANNEXATION SITE



EL CAPITAN RANCH LLC
 10920 CALLE REAL
 APN: 081-250-016



3 WEST CARRILLO STREET
 SUITE 205
 SANTA BARBARA, CA 93101
 (805) 962-4611

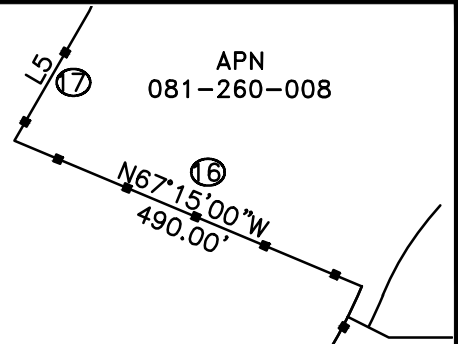
LAFCO 25-XX "EXHIBIT B"
 EL CAPITAN HORSE RANCH
 BOUNDARY CHANGE
 TO GOLETA WATER DISTRICT

BOUNDARY DETAIL:

LEGEND

R1 = INST No. 2025-0028517

- EXISTING GOLETA WATER DISTRICT BOUNDARY
- PROPOSED GOLETA WATER DISTRICT ANNEXATION

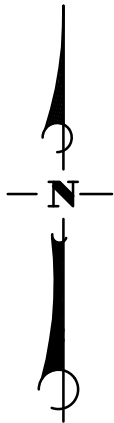


APN
081-260-008

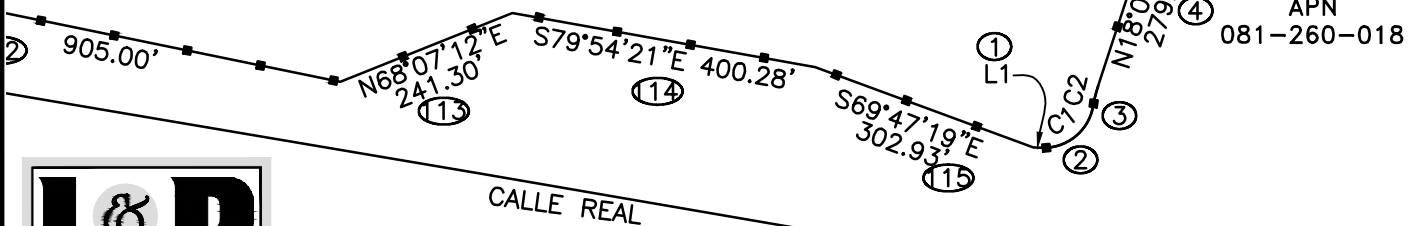
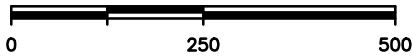
APN
081-260-019

APN
081-260-018

**EL CAPITAN RANCH LLC
10920 CALLE REAL
APN: 081-250-016**



SCALE: 1"=250'



NOTE: SEE PAGE 9 FOR LINE & CURVE TABLES

**LAFCO 25-XX "EXHIBIT B"
EL CAPITAN HORSE RANCH
BOUNDARY CHANGE
TO GOLETA WATER DISTRICT**

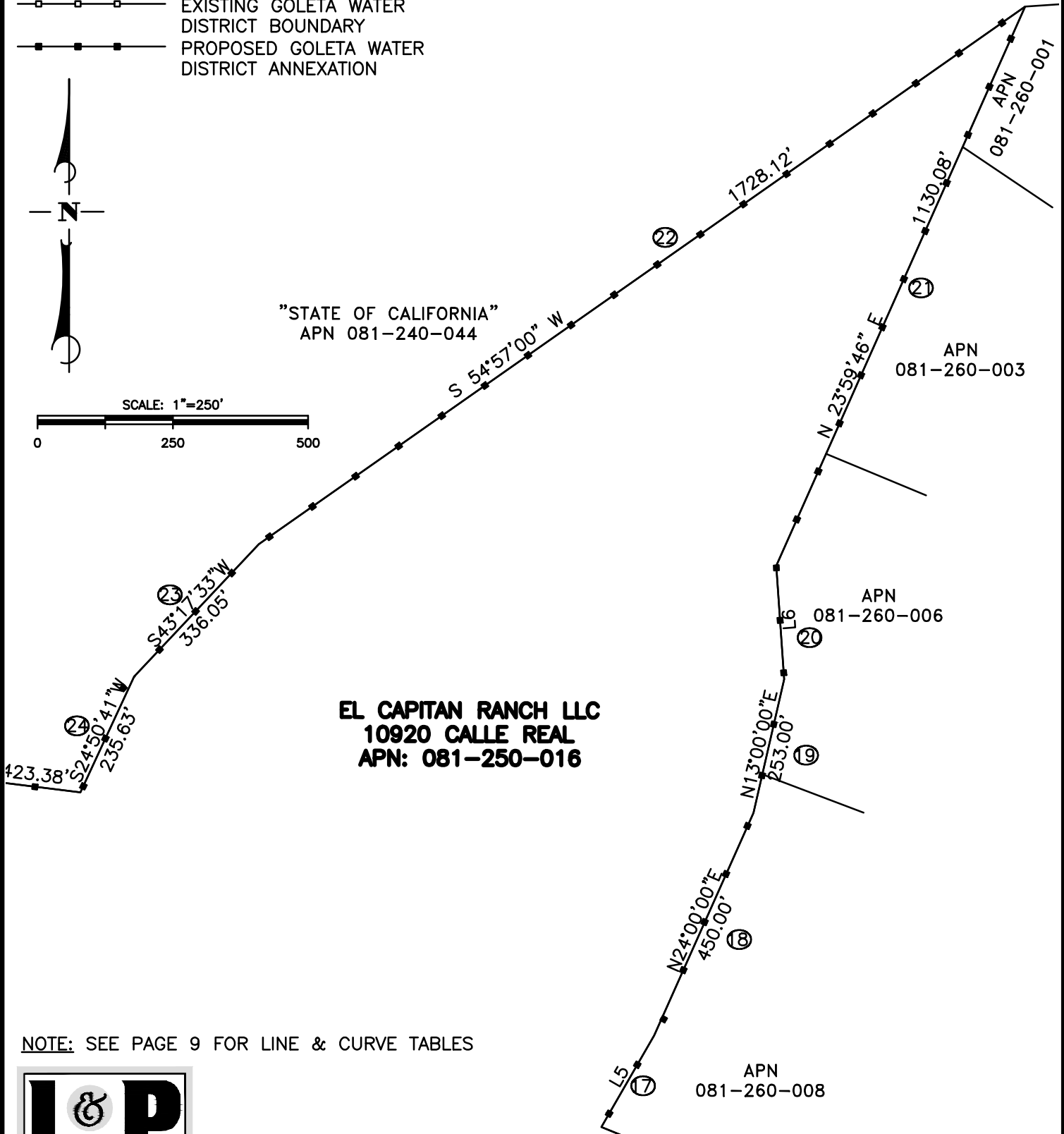
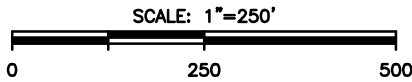
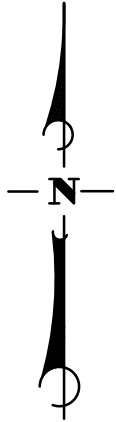
3 WEST CARRILLO STREET
SUITE 205
SANTA BARBARA, CA 93101
(805) 962-4611

BOUNDARY DETAIL:

LEGEND

R1 = INST No. 2025-0028517

- EXISTING GOLETA WATER DISTRICT BOUNDARY
- PROPOSED GOLETA WATER DISTRICT ANNEXATION



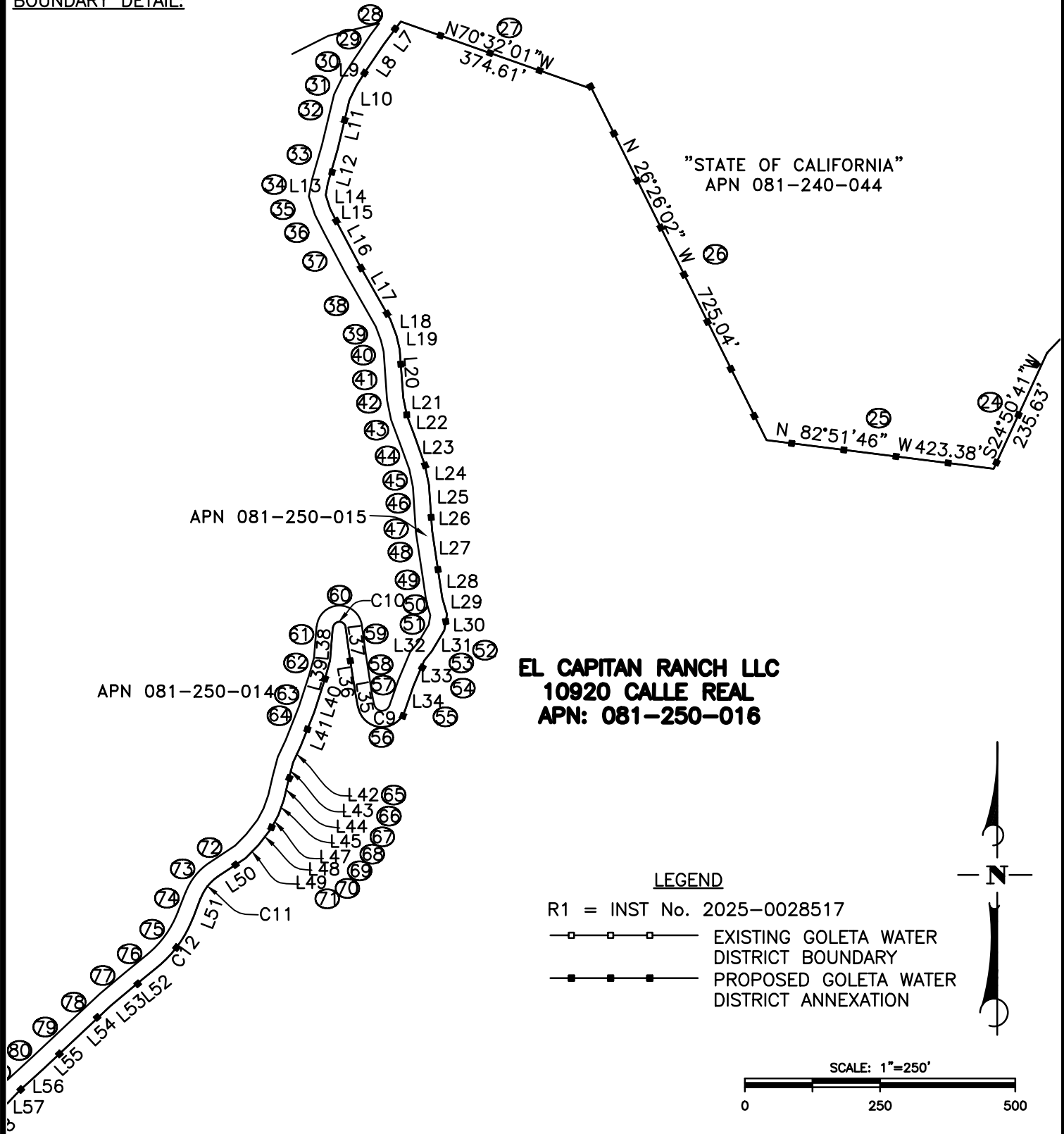
NOTE: SEE PAGE 9 FOR LINE & CURVE TABLES



3 WEST CARRILLO STREET
 SUITE 205
 SANTA BARBARA, CA 93101
 (805) 962-4611

**LAFCO 25-XX "EXHIBIT B"
 EL CAPITAN HORSE RANCH
 BOUNDARY CHANGE
 TO GOLETA WATER DISTRICT**

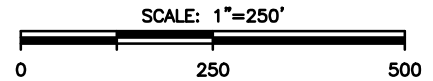
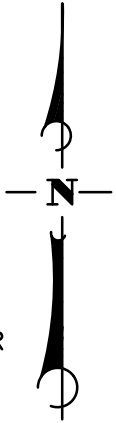
BOUNDARY DETAIL:



**EL CAPITAN RANCH LLC
10920 CALLE REAL
APN: 081-250-016**

LEGEND

- R1 = INST No. 2025-0028517
- EXISTING GOLETA WATER DISTRICT BOUNDARY
- - - □ - - - PROPOSED GOLETA WATER DISTRICT ANNEXATION



NOTE: SEE PAGE 9 FOR LINE & CURVE TABLES



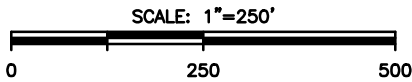
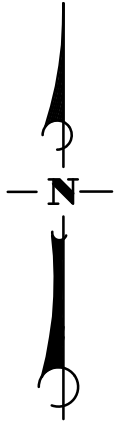
3 WEST CARRILLO STREET
SUITE 205
SANTA BARBARA, CA 93101
(805) 962-4611

**LAFCO 25-XX "EXHIBIT B"
EL CAPITAN HORSE RANCH
BOUNDARY CHANGE
TO GOLETA WATER DISTRICT**

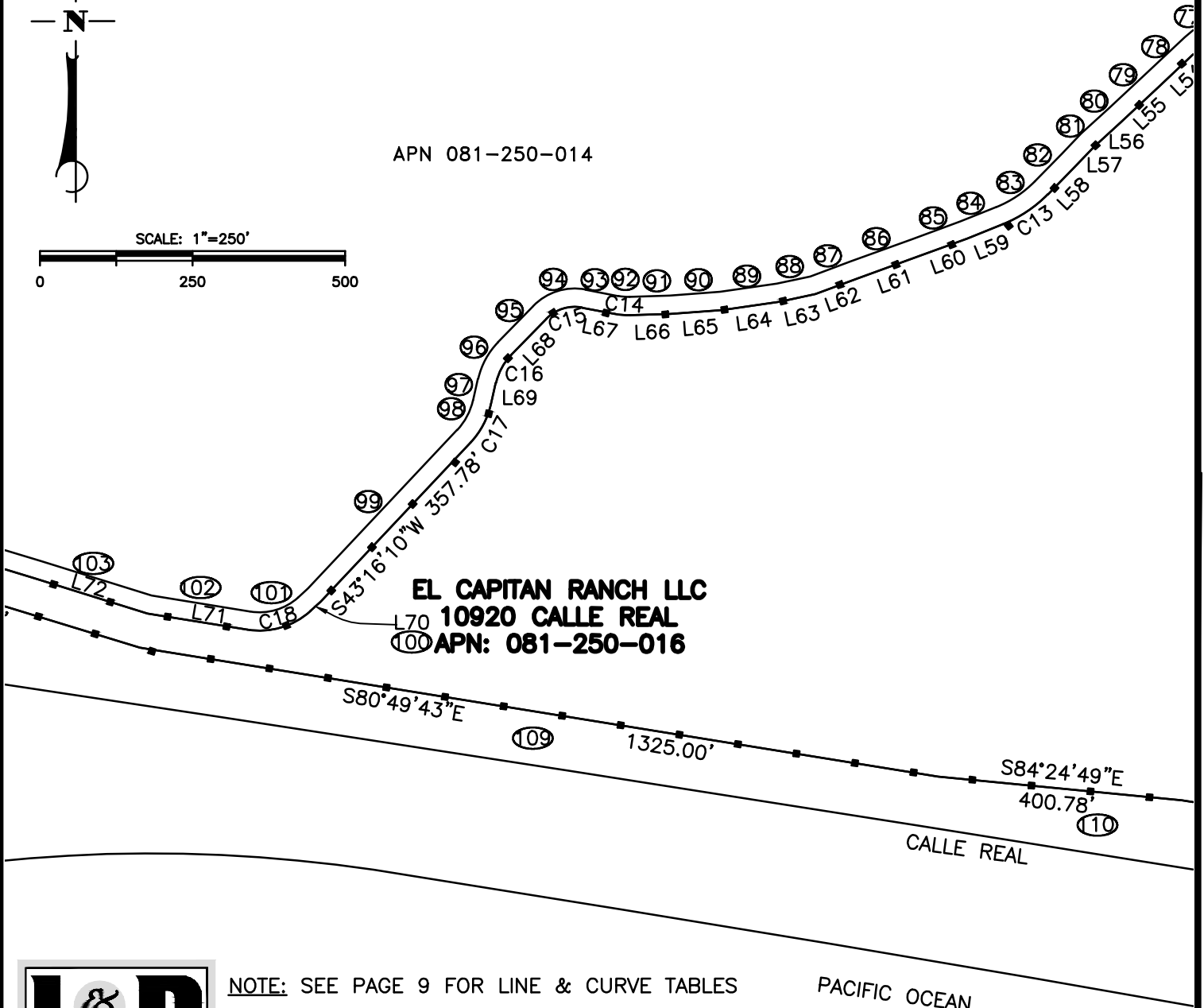
BOUNDARY DETAIL:

LEGEND

- R1 = INST No. 2025-0028517
- EXISTING GOLETA WATER DISTRICT BOUNDARY
- PROPOSED GOLETA WATER DISTRICT ANNEXATION



APN 081-250-014



EL CAPITAN RANCH LLC
10920 CALLE REAL
APN: 081-250-016



3 WEST CARRILLO STREET
 SUITE 205
 SANTA BARBARA, CA 93101
 (805) 962-4611

NOTE: SEE PAGE 9 FOR LINE & CURVE TABLES

PACIFIC OCEAN

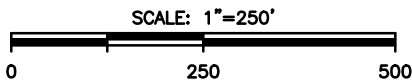
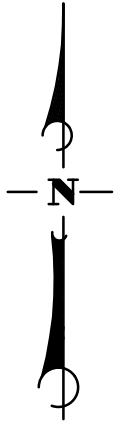
LAFCO 25-XX "EXHIBIT B"
EL CAPITAN HORSE RANCH
BOUNDARY CHANGE
TO GOLETA WATER DISTRICT

BOUNDARY DETAIL:

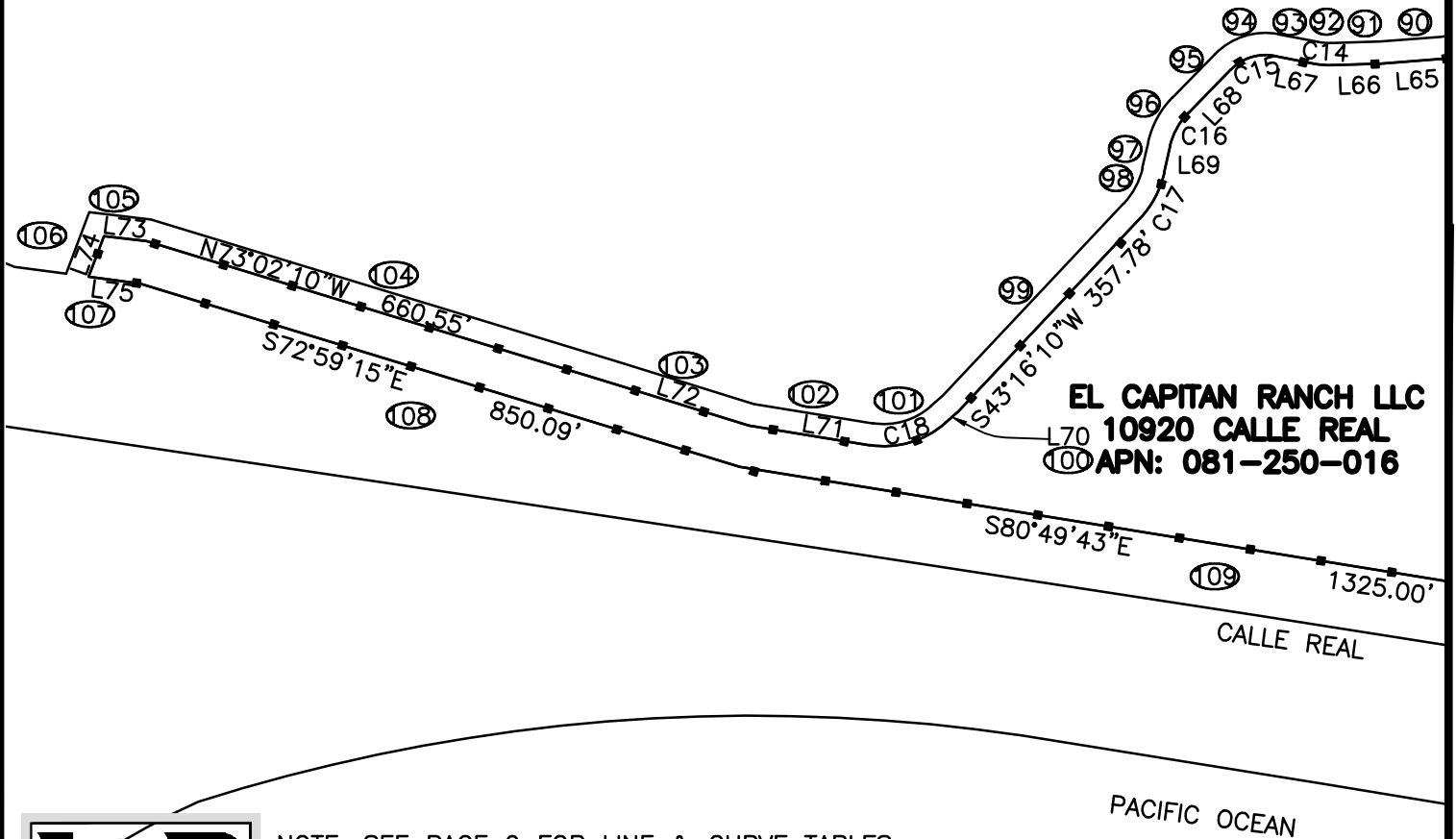
LEGEND

R1 = INST No. 2025-0028517

- EXISTING GOLETA WATER DISTRICT BOUNDARY
- PROPOSED GOLETA WATER DISTRICT ANNEXATION



APN 081-250-014



EL CAPITAN RANCH LLC
10920 CALLE REAL
APN: 081-250-016

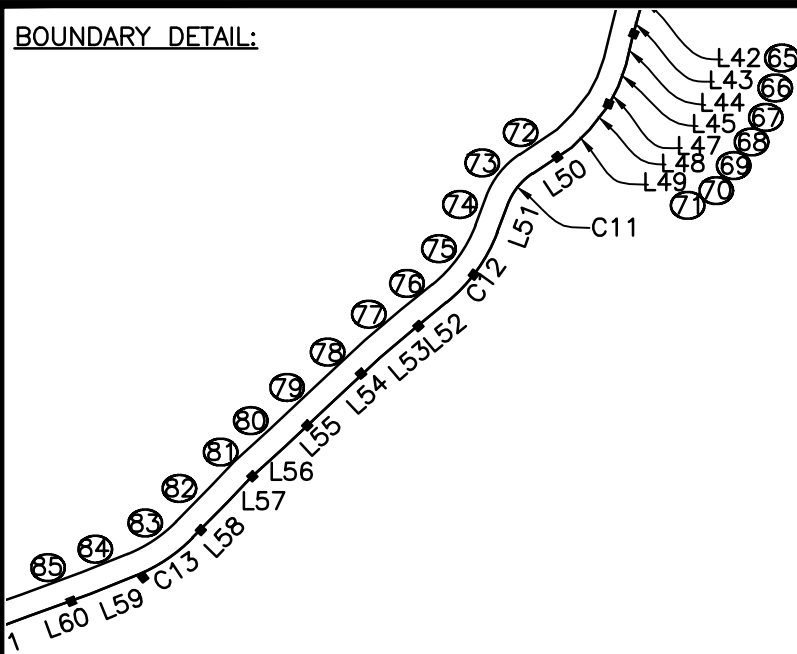


3 WEST CARRILLO STREET
 SUITE 205
 SANTA BARBARA, CA 93101
 (805) 962-4611

NOTE: SEE PAGE 9 FOR LINE & CURVE TABLES

LAFCO 25-XX "EXHIBIT B"
EL CAPITAN HORSE RANCH
BOUNDARY CHANGE
TO GOLETA WATER DISTRICT

BOUNDARY DETAIL:

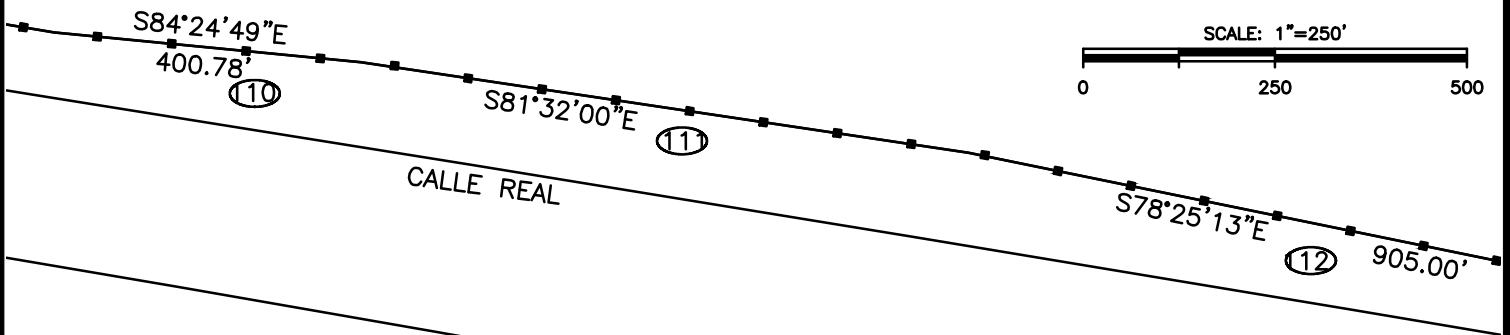
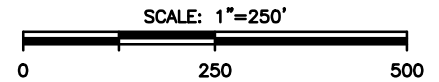
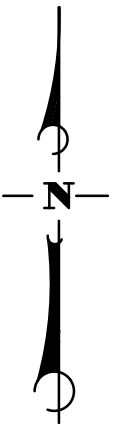


LEGEND

R1 = INST No. 2025-0028517

- EXISTING GOLETA WATER DISTRICT BOUNDARY
- PROPOSED GOLETA WATER DISTRICT ANNEXATION

**EL CAPITAN RANCH LLC
10920 CALLE REAL
APN: 081-250-016**



NOTE: SEE PAGE 9 FOR LINE & CURVE TABLES



3 WEST CARRILLO STREET
SUITE 205
SANTA BARBARA, CA 93101
(805) 962-4611

**LAFCO 25-XX "EXHIBIT B"
EL CAPITAN HORSE RANCH
BOUNDARY CHANGE
TO GOLETA WATER DISTRICT**

LINE TABLE		
LINE	BEARING	LENGTH
①	L1	S87°23'06"E 10.24'
⑨	L2	N13°24'01"W 142.63'
⑫	L3	N61°12'29"E 60.00'
⑭	L4	N61°12'29"E 199.37'
⑰	L5	N30°00'00"E 195.00'
⑳	L6	N04°00'00"W 210.00'
㉒	L7	S36°41'58"W 51.65'
㉓	L8	S33°54'55"W 57.87'
⑳	L9	S32°58'42"W 33.97'
⑥①	L10	S25°56'57"W 30.12'
⑥②	L11	S13°35'20"W 93.69'
⑥③	L12	S16°02'34"W 65.64'
⑥④	L13	S10°12'51"W 22.40'
⑥⑤	L14	S17°59'01"E 25.91'
⑥⑥	L15	S27°06'48"E 37.06'
⑥⑦	L16	S27°49'43"E 81.36'
⑥⑧	L17	S29°33'56"E 115.40'
⑥⑨	L18	S20°23'31"E 31.74'
⑦①	L19	S13°34'58"E 25.82'
⑦②	L20	S04°07'05"E 89.68'
⑦③	L21	S11°34'17"E 33.48'
⑦④	L22	S20°41'24"E 43.93'
⑦⑤	L23	S19°32'33"E 53.73'
⑦⑥	L24	S11°34'17"E 37.70'
⑦⑦	L25	S03°53'09"E 47.97'
⑦⑧	L26	S03°42'19"E 36.25'
⑦⑨	L27	S08°37'32"E 78.85'
⑧①	L28	S08°32'04"E 47.38'
⑧②	L29	S15°57'32"E 31.31'
⑧③	L30	S09°27'43"W 30.32'
⑧④	L31	S30°35'15"W 44.55'
⑧⑤	L32	S39°34'11"W 22.64'
⑧⑥	L33	S22°41'15"W 51.01'
⑧⑦	L34	S19°26'40"W 48.41'
⑧⑧	L35	N10°47'42"W 24.92'
⑧⑨	L36	N08°40'28"W 69.61'
⑨①	L37	N07°53'33"W 54.68'
⑨②	L38	S04°37'58"W 60.54'

LINE TABLE		
LINE	BEARING	LENGTH
⑥②	L39	S15°44'46"W 37.37'
⑥③	L40	S17°58'23"W 62.53'
⑥④	L41	S21°40'48"W 67.51'
⑥⑤	L42	S24°38'55"W 33.46'
⑥⑥	L43	S14°40'43"W 33.00'
⑥⑦	L44	S13°27'02"W 38.24'
⑥⑧	L45	S19°59'16"W 29.70'
	-L46	
⑥⑨	L47	S27°21'26"W 28.25'
⑦①	L48	S37°46'19"W 38.85'
⑦②	L49	S45°00'38"W 33.88'
⑦③	L50	S56°19'06"W 61.26'
⑦④	L51	S20°50'58"W 38.92'
⑦⑤	L52	S50°59'26"W 52.38'
⑦⑥	L53	S49°44'48"W 60.11'
⑦⑦	L54	S46°55'56"W 83.33'
⑦⑧	L55	S46°52'55"W 86.04'
⑧①	L56	S47°35'43"W 61.18'
⑧②	L57	S43°34'41"W 44.52'
⑧③	L58	S44°27'53"W 63.88'
⑧④	L59	S68°12'14"W 63.33'
⑧⑤	L60	S69°53'07"W 85.68'
⑧⑥	L61	S70°09'10"W 105.76'
⑧⑦	L62	S69°22'30"W 73.16'
⑧⑧	L63	S78°01'44"W 59.56'
⑧⑨	L64	S81°48'04"W 95.68'
⑨①	L65	S85°38'24"W 84.48'
⑨②	L66	S88°14'18"W 66.66'
⑨③	L67	N79°09'17"W 54.36'
⑨④	L68	S44°21'23"W 82.94'
⑨⑤	L69	S12°51'57"W 36.24'
⑩①	L70	S48°11'24"W 23.31'
⑩②	L71	N80°50'52"W 165.50'
⑩③	L72	N72°43'34"W 192.87'
⑩④	L73	N83°25'37"W 58.09'
⑩⑤	L74	S20°33'41"W 58.53'
⑩⑥	L75	S82°26'51"E 69.46'

CURVE TABLE				
CURVE	RADIUS	DELTA	LENGTH	RADIAL BEARING
②	C1	65.00'	81°30'00"	92.46' N02°34'13"E
③	C2	230.00'	7°02'39"	28.28' S78°55'47"E
⑤	C3	390.00'	31°30'53"	214.51' N71°53'08"W
⑦	C4	116.47'	22°21'38"	45.45' S77°28'31"W
⑧	C5	186.25'	20°36'34"	66.99' N55°59'25"E
⑩	C6	265.34'	27°26'35"	127.09' S82°37'32"W
⑬	C7	65.00'	90°00'00"	102.10' N61°12'29"E
⑮	C8	670.00'	38°27'29"	449.72' N28°47'31"W
⑮	C9	45.00'	149°45'38"	117.62' N70°33'20"W
⑥①	C10	12.00'	167°28'29"	35.08' S82°06'27"W
⑦③	C11	85.00'	35°28'10"	52.62' S33°40'52"E
⑦⑤	C12	215.00'	30°08'27"	113.10' N69°09'02"W
⑧③	C13	215.00'	23°44'21"	89.08' N45°32'07"W
⑨②	C14	115.00'	12°36'25"	25.30' N01°45'42"W
⑨④	C15	65.00'	56°29'20"	64.08' S10°50'43"W
⑨⑥	C16	95.00'	31°30'26"	52.24' S45°38'37"E
⑨⑧	C17	135.00'	30°25'14"	71.68' N77°09'03"W
⑩①	C18	125.00'	50°57'44"	111.18' N41°48'36"W



3 WEST CARRILLO STREET
SUITE 205
SANTA BARBARA, CA 93101
(805) 962-4611

P.N. 21-003.01

LAFCO 25-XX "EXHIBIT B"
EL CAPITAN HORSE RANCH
BOUNDARY CHANGE
TO GOLETA WATER DISTRICT