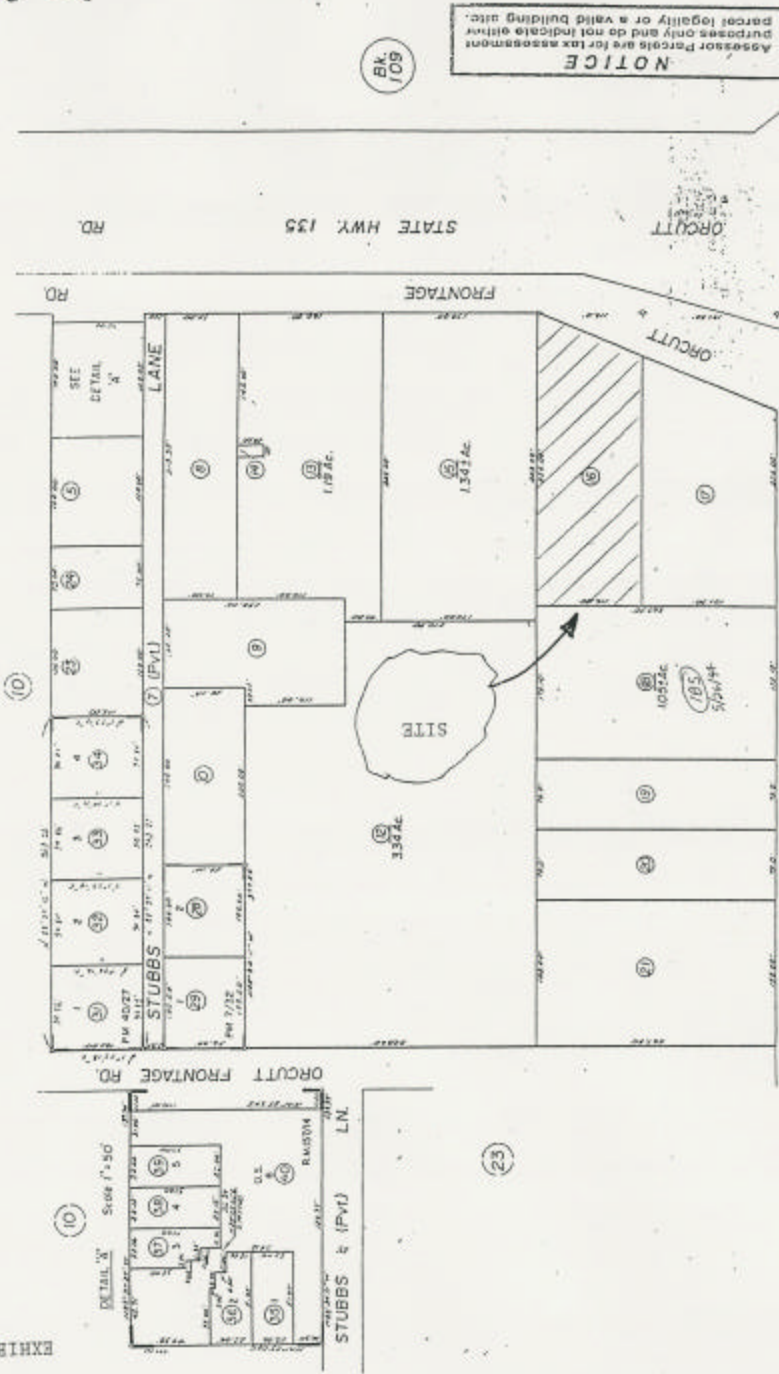


111-110  
 6

POR. SE. 1/4 SEC. 34, T.10N., R.34W., S.B.B.M.

EXHIBIT "C"



**NOTICE**  
 Assessor's Parcels are for tax assessment purposes only and do not indicate either parcel legality or a valid building site.

Bk 109

Assessor's Map Bk III - Pg II  
 County of Santa Barbara, Calif.

NOTE - Assessor's Block Numbers Shown in Ellipses.  
 Assessor's Parcel Numbers Shown in Circles.

09/04/90 R.M. Bk 157, Pg 14-15 - Tract 14,006

(12)

(23)